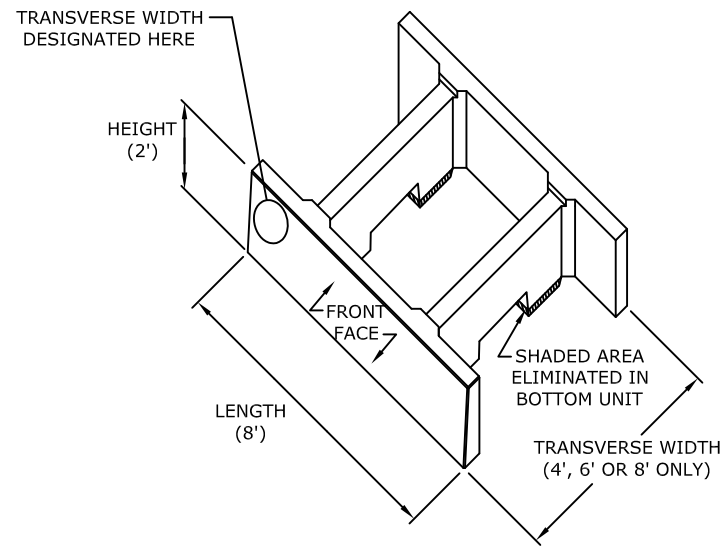


TYPICAL DOUBLEWAL MODULE PROPERTIES

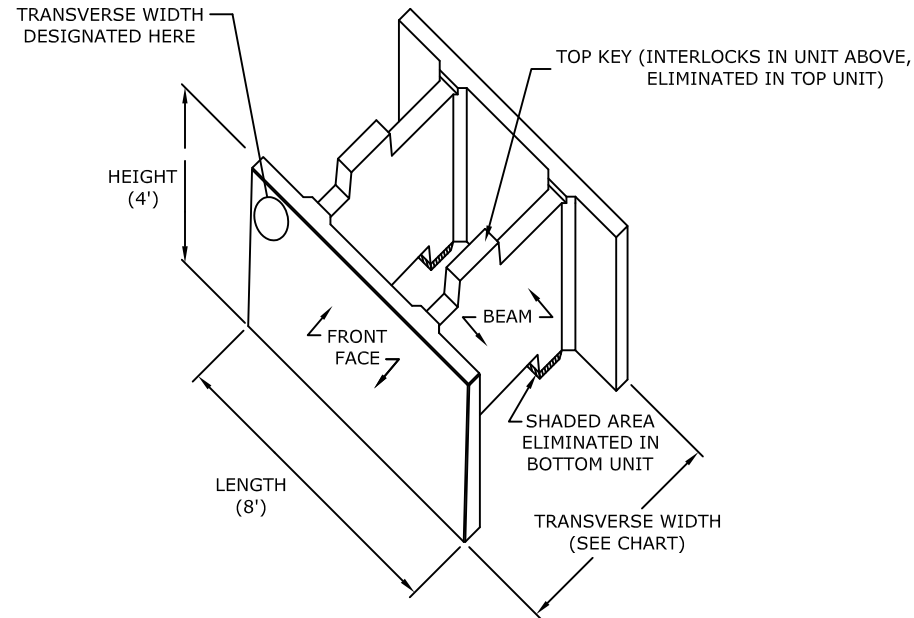


TWO FOOT HIGH FULL MODULE

N.T.S.

2' HIGH X 8' LONG DOUBLEWAL MODULE WEIGHT

WIDTH IN FEET	4	6	8	10	12	14	16	18	20	22	24
CONC. WT. IN LBS.	3551	4178	4619	-	-	-	-	-	-	-	-

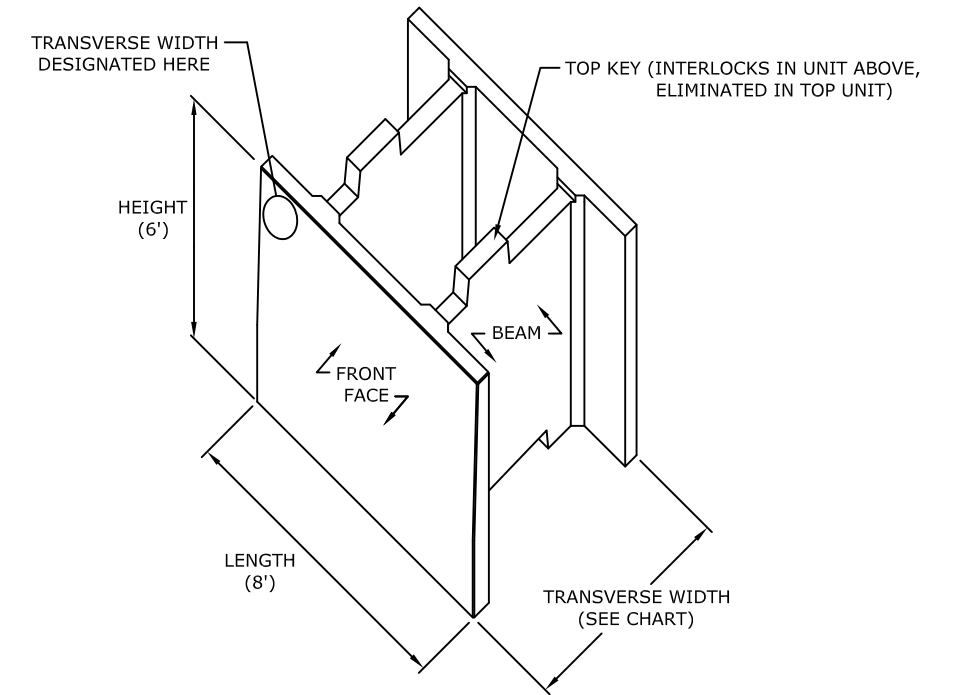


4 FOOT HIGH FULL MODULE

N.T.S.

4' HIGH X 8' LONG DOUBLEWAL MODULE WEIGHT

WIDTH IN FEET	4	6	8	10	12	14	16	18	20	22	24
CONC. WT. IN LBS.	7114	8387	9238	10802	15702	17123	18951	20454	22020	24245	25865

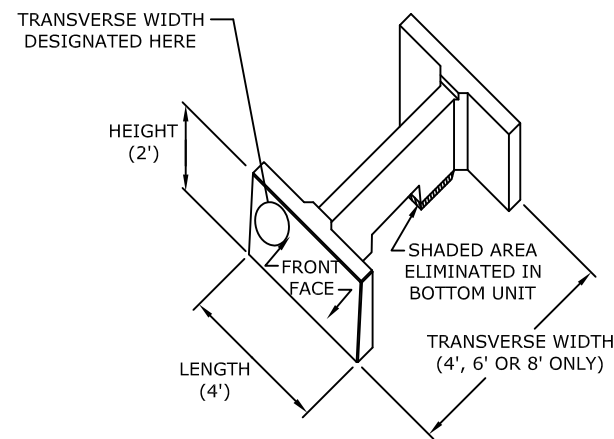


6 FOOT HIGH FULL MODULE

N.T.S.

6' HIGH X 8' LONG DOUBLEWAL MODULE WEIGHT

WIDTH IN FEET	4	6	8	10	12	14	16	18	20	22	24
CONC. WT. IN LBS.	11287	13171	14194	16266	22996	25039	27310	29336	-	-	-

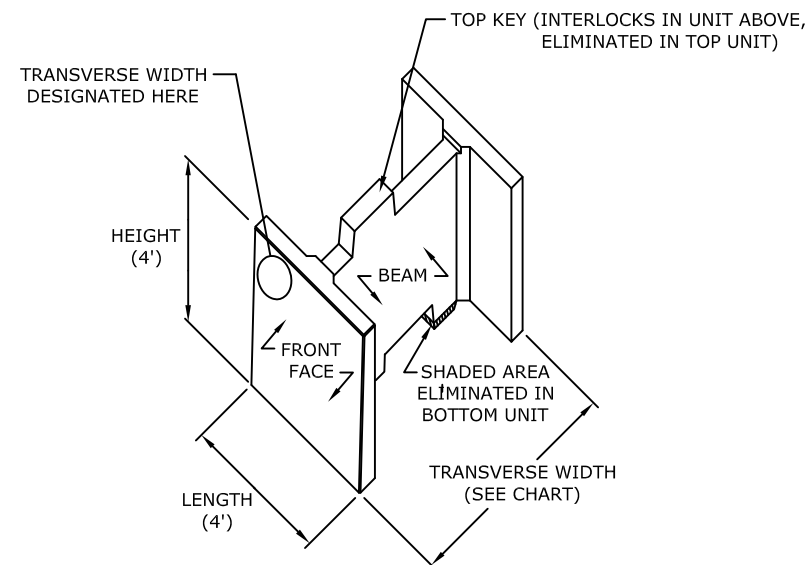


TWO FOOT HIGH HALF MODULE

N.T.S.

2' HIGH X 4' LONG DOUBLEWAL MODULE WEIGHT

WIDTH IN FEET	4	6	8	10	12	14	16	18	20	22	24
CONC. WT. IN LBS.	1776	2089	2310	-	-	-	-	-	-	-	-

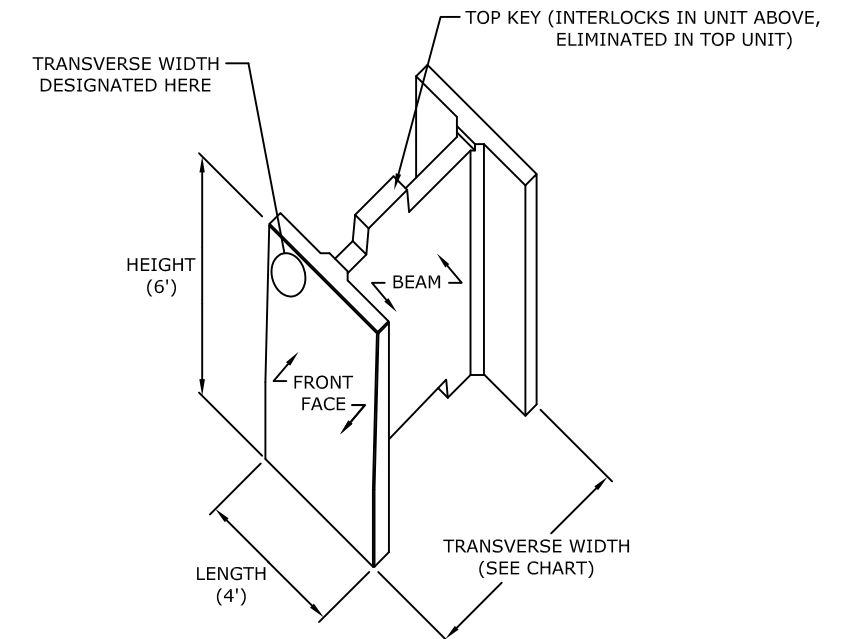


4 FOOT HIGH HALF MODULE

N.T.S.

4' HIGH X 4' LONG DOUBLEWAL MODULE WEIGHT

WIDTH IN FEET	4	6	8	10	12	14	16	18	20	22	24
CONC. WT. IN LBS.	3557	4194	4619	5401	7851	8562	9476	10227	11010	12123	12933



6 FOOT HIGH HALF MODULE

N.T.S.

6' HIGH X 4' LONG DOUBLEWAL MODULE WEIGHT

WIDTH IN FEET	4	6	8	10	12	14	16	18	20	22	24
CONC. WT. IN LBS.	5644	6586	7097	8133	11498	12520	13655	14668	-	-	-

NOTE: THE ABOVE FIGURES ARE FOR PLAIN FORM FINISH UNITS AND ARE APPROXIMATE. FORMLINER FINISH UNIT WEIGHTS CAN VARY. THE ACTUAL WEIGHTS AND VOLUMES SHOULD BE CONFIRMED WITH THE LOCAL MANUFACTURER.